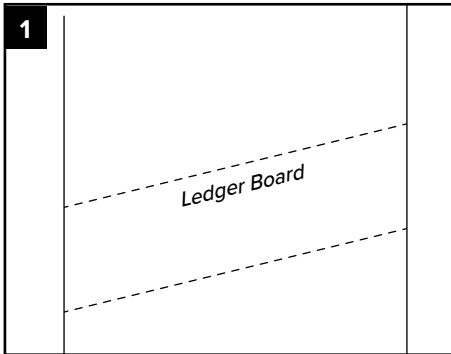




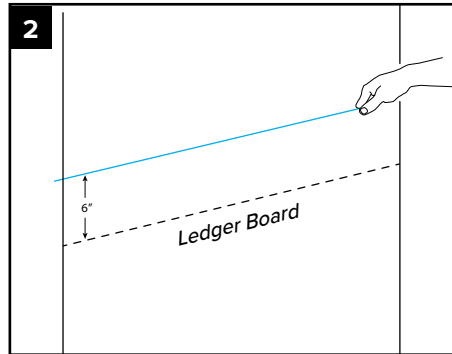
Trex[®] Seal[™]
SUB-LEDGER TAPE

INSTALLATION INSTRUCTIONS FOR TREX SEAL 22" SUB-LEDGER TAPE

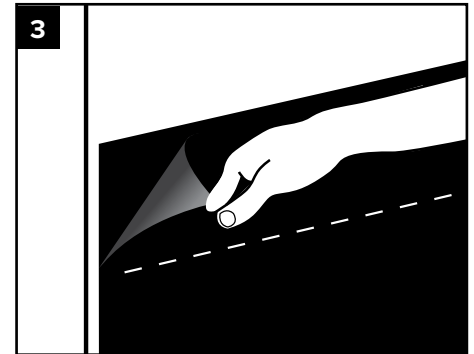
INSTALLATION:



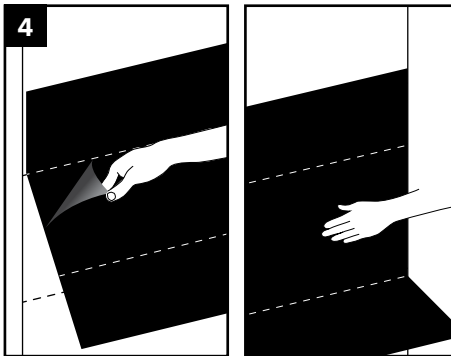
1. Identify where the top of the ledger board will be located.



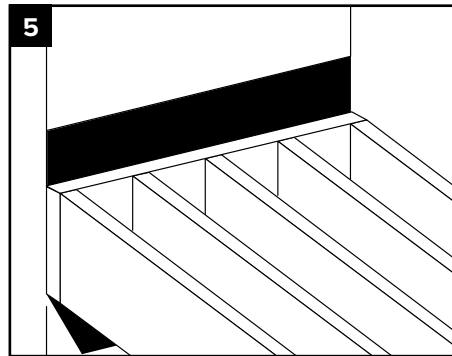
2. Measure up 6" and snap a chalk line the width of the deck.



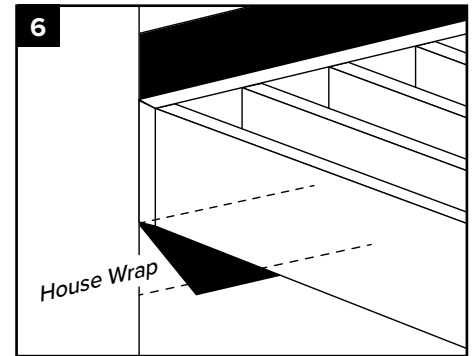
3. Peel off the 6" release liner and attach the tape across the width of the deck.



4. Once aligned properly, peel off the 10" release liner and smooth the tape down the wall.



5. Install the ledger board and joist.



6. Install the house wrap and slide it up behind the remaining section of the sub-ledger tape. Then peel off the remaining release liner and smooth the tape over the house wrap.



For installation video,
visit [trexseal.com](https://www.trexseal.com)