

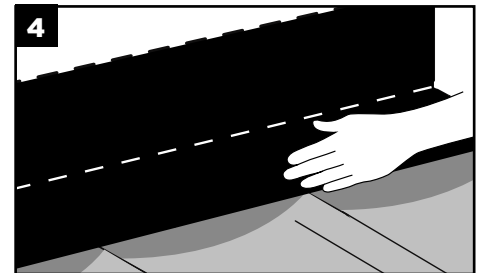
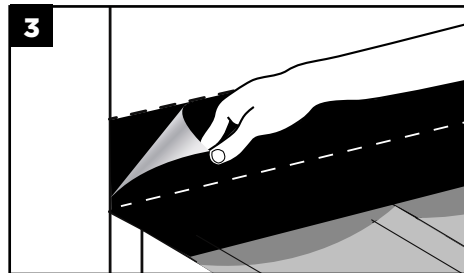
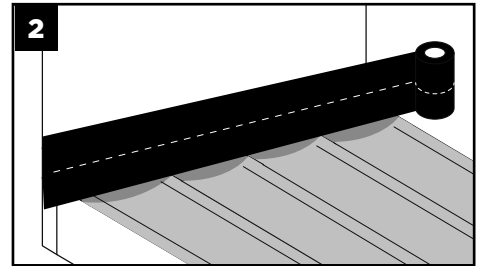
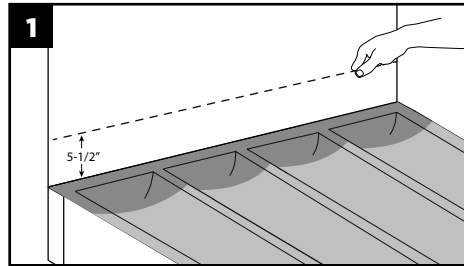


## TREX SEAL INSTALLATION INSTRUCTIONS

### INSTALLATION:

1. Install the Trex RainEscape system. Mark a 5-1/2" line above the ledger board under the siding.
2. Unroll the Trex Seal Ledger Tape.
3. Fold the Trex Seal Ledger Tape in half. Remove one of the release liners. Press to seal against the vertical surface at the 5-1/2" line.
4. Once the vertical surface is attached, remove the second release liner, unfold the Trex Seal Ledger Tape and press firmly against the Trex RainEscape system.

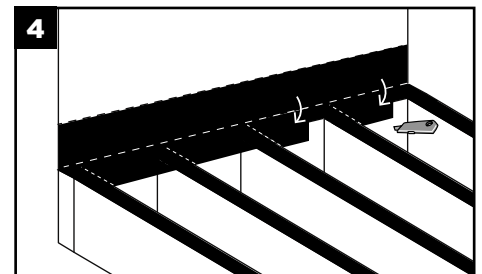
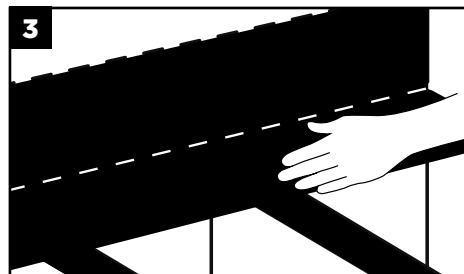
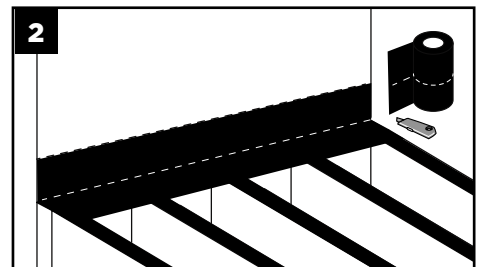
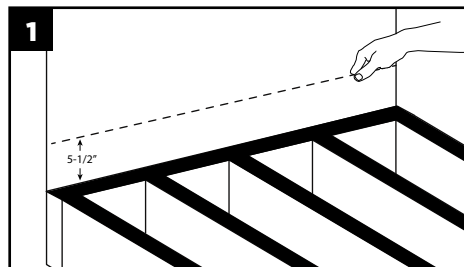
### WHEN INSTALLING THE TREX RAINESCAPE DECK-DRAINAGE SYSTEM



### INSTALLATION:

1. Mark a 5-1/2" line above the ledger board under the siding.
2. Unroll the Trex Seal Ledger Tape and fold in half. Remove one of the release liners. Press to seal against the vertical surface.
3. Once the vertical surface is attached, remove the second release liner, unfold the Trex Seal Ledger Tape and press firmly against the ledger.
4. With a utility knife or scissors, cut along each joist side and fold the tabs down. Firmly press the cut tabs against the ledger.

### WHEN **NOT** INSTALLING THE TREX RAINESCAPE DECK-DRAINAGE SYSTEM



For more information, visit [trexseal.com](http://trexseal.com)